

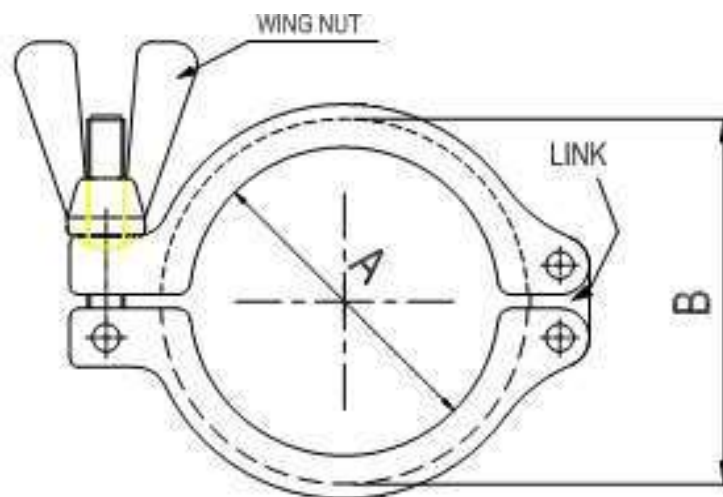
13CS LINK-CLAMP™ 304 & 316

13CS LINK-CLAMP™

BS. 4825
 DIN 32676 Series C
 ASME BPE
 DIN 32676 Series A

SIZE TUBE O.D.	A mm	B mm	Working Pressure Bar @ 150° C
½" -¾"	20.6	28.0	50 Bar
DN10-20	27.2	37.0	50 Bar
1" - 1 ½"	41.0	53.5	50 Bar
DN25-40	44.5	54.5	50 Bar
2"	54.5	67.0	50 Bar
DN50	57.0	68.0	50 Bar
2½"	68.0	80.5	50 Bar
3"	81.5	94.0	40 Bar
DN65	84.0	95.0	40 Bar
3½"	96.5	109.0	40 Bar
DN80	99.0	110.0	40 Bar
4"	109.5	122.0	30 Bar
DN100	112.0	123.0	30 Bar
6"	156.6	175.0	30 Bar
8"	207.4	226.0	20 Bar

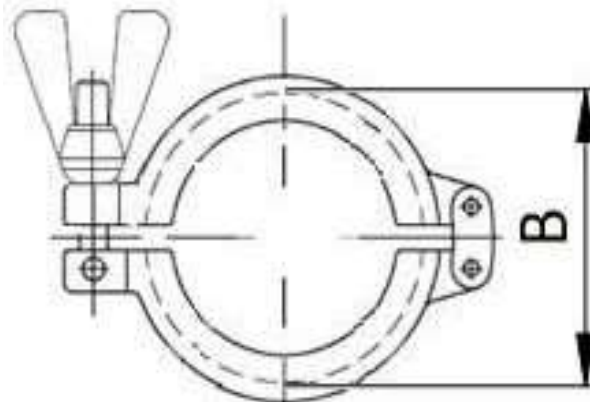
Wing Nut Type – F2



13EU LINK-CLAMP™
304 & 316
13EU LINK-CLAMP™

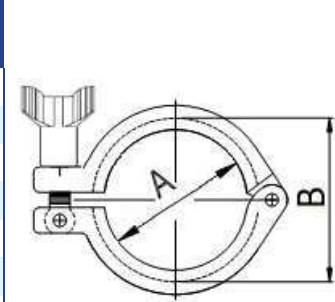
BS. 4825
 DIN 32676 Series C
 DIN 32676 Series A
 ISO 2852
 Din 32676 Series B

SIZE TUBE OD	B Mm (To Suit Flange)	Working Pressure Bar
BS. 4825 DIN 32676 SC		
½" - ¾"	25.0	50 Bar
	34.0	50 Bar
1" - 1 ½"	50.5	50 Bar
2"	64.0	50 Bar
2½"	77.5	50 Bar
3"	91.0	40 Bar
3½"	106.0	40 Bar
4"	119.0	35 Bar
4 ½"	130.0	30 Bar
5"	144.5	30 Bar
5 1/2"	155.0	30 Bar
6"	167.0	30 Bar
6 5/8"	183.0	25 Bar
8"	217.5	20 Bar
8 5/8"	233.5	20 Bar
10"	268.0	16 Bar
12"	319.0	10 Bar

Wing Nut Type – F2


13MHH - HEAVY CLAMP

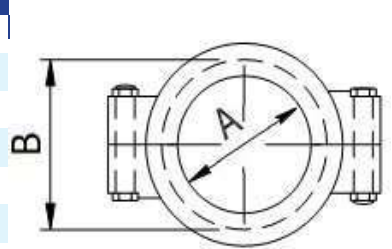
SIZE TUBE O.D.	A mm	B mm
½" -¾"	20.0	28.0
1"-1½"	44.4	53.6
2"	57.8	67.0
2½"	71.4	80.6
3"	84.0	94.0
3½"	99.0	110.0
4"	110.0	122.0
4½"	123.0	134.0
6"	155.4	170.4
8"	205.0	220.0

Wing Nut Type – 11

13MHP HIGH PRESSURE CLAMP

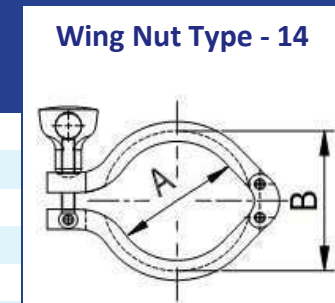
SIZE TUBE O.D.	A mm	B mm
¾"	20.0	28.0
1½"	43.3	52.0
2"	56.4	65.5
2½"	69.5	79.0
3"	77.56	92.5
4"	108.9	120.5
6"	158	170.0
10"	258	272.8
12"	309	327.6

Brass Nut /SS304 Bolt

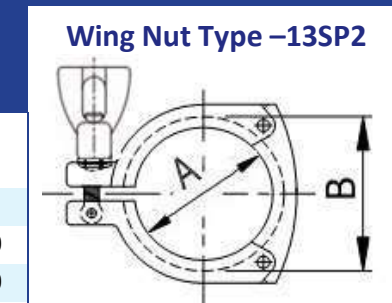
Not recommended for use with 1" Fittings.


13MHM - HEAVY CLAMP

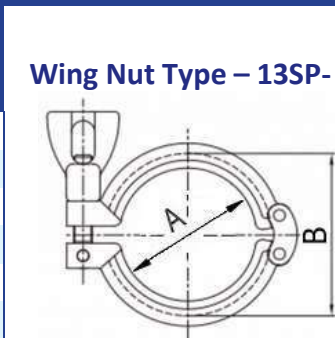
SIZE TUBE O.D.	A mm	B mm
½" -¾"	20.0	28.2
1"-1 ½"	44.4	53.6
2"	57.8	67.0
2½"	71.4	80.6
3"	84.0	94.0
4"	110.0	122.0
6"	155.4	170.4

Wing Nut Type - 14

3-PIECE CLAMP

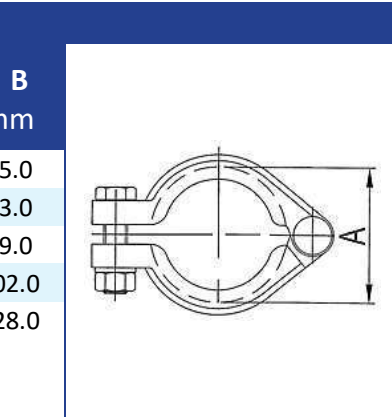
SIZE TUBE O.D.	A mm	B mm
1"-1 ½"	53.9	80.0
2"	67.4	94.0
2½"	80.9	109.0
3"	94.4	126.0
4"	122.4	154.0

Wing Nut Type –13SP2

13SF - HEAVY DOUBLE PIN CLAMP

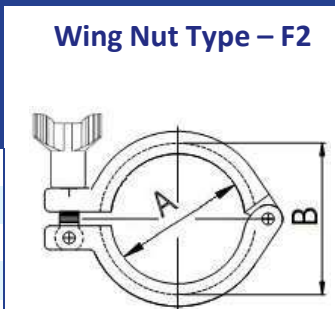
SIZE TUBE O.D.	A mm	B mm
½" -¾"	20.0	28.2
A37	27.5	42.9
1 ½"	45.0	53.6
2"	59.0	72.0
2½"	67.0	84.0
3"	85.0	98.0
4"	114.0	127.0

Wing Nut Type – 13SP- 2

13IU – BOLTED CLAMP

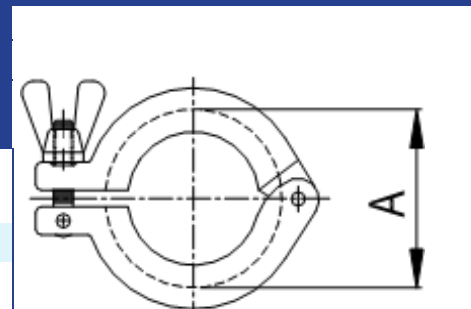
SIZE TUBE O.D.	A mm	B mm
1½"	45.0	55.0
2"	63.0	73.0
2½"	74.0	89.0
3"	88.0	102.0
4"	111.0	128.0


13IS – I-LINE CLAMP

SIZE TUBE O.D.	A mm	B mm
1"-1½"	53.4	83.6
2"	72.2	111.0
2½"	88.1	121.4
3"	102.4	136.2
4"	127.8	162.0
6"	195.3	242.2

Wing Nut Type – F2

13MHH - A37 HEAVY CLAMP

SIZE TUBE O.D.	A mm
A37	37.0



TECHNICAL DATA – O.D. CLAMPS

13MHH – HEAVY CLAMP		WORKING PRESSURE G (psi) - with wing nut tightened to 25in-lb of torque							
TEMPERATURE		SIZE TUBE O.D.							
(°F)	(°C)	½" - ¾"	1"-1.5"	2"	2.5"	3"	4"	6"	8"
70	21	1500	500	450	400	350	200	150	100
250	121	1200	250	250	200	150	125	75	50

13MHHS - 3-PIECE CLAMP		WORKING PRESSURE (psi) - with wing nut tightened to 25in-lb of torque				
TEMPERATURE		SIZE TUBE O.D.				
(°F)	(°C)	1"-1.5"	2"	2.5"	3"	4"
70	21	600	550	450	350	250
250	121	300	275	225	175	150

13MHHM – HEAVY CLAMP		WORKING PRESSURE (psi) - with wing nut tightened to 25in-lb of torque						
TEMPERATURE		SIZE TUBE O.D.						
(°F)	(°C)	½" - ¾"	1"-1.5"	2"	2.5"	3"	4"	6"
70	21	1500	500	450	400	350	200	150
250	121	1200	250	250	200	150	125	75

13MHP – HEAVY CLAMP		WORKING PRESSURE (psi) - with nuts tightened to 20ft-lb of torque						
TEMPERATURE		SIZE TUBE O.D. (Not Recommended For 1" Fittings)						
(°F)	(°C)	½" - ¾"	1"-1½"	2"	2.5"	3"	4"	6"
70	21	1500	1500	1000	1000	1000	1000	300
250	121	1200	1200	800	800	800	800	200

13SF – HEAVY DOUBLE PIN CLAMP		WORKING PRESSURE (psi) - with wing nut tightened to 25in-lb of torque						
TEMPERATURE		SIZE TUBE O.D.						
(°F)	(°C)	½" - ¾"	1"-1.5"	2"	2.5"	3"	4"	
70	21	1500	500	450	400	350	200	
250	121	1200	250	250	200	150	125	

13IS – I-LINE CLAMP		WORKING PRESSURE (psi) - with wing nut tightened to 25in-lb of torque						
TEMPERATURE		SIZE TUBE O.D.						
(°F)	(°C)	1"-1.5"	2"	2.5"	3"	4"	6"	
70	21	150	150	150	150	100	100	
250	121	125	125	125	125	75	50	

13IU – BOLTED CLAMP		WORKING PRESSURE (psi) - with wing nut tightened to 25in-lb of torque					
TEMPERATURE		SIZE TUBE O.D.					
(°F)	(°C)	1.5"	2"	2.5"	3"	4"	
70	21	500	450	400	350	200	
250	121	250	250	200	150	125	

To convert Pressure values from psig to kPa use the following formula: $\text{psi} \times 6.895 = \text{kPa}$ (approx).
 Example: $200\text{psi} \times 6.895 = 1379\text{kPa}$. (also $1\text{Bar} = 14.5\text{psi}$ Approximation)